

7 Secrets to Achieving a Modern Contemporary Luxe House Design

JMG Construction Masterpieces



Project: Macalangan Residence, Iligan City
Discipline: Structural Resurrection & Luxe Design
Setup: /modern-contemporary-luxe-house-design-jmg-construction

The Reality of an Unfinished Structural Shell

True luxury is defined by what lies beneath the surface. Architectural presence is only as sustainable as the structural integrity supporting it.



⊕ **Observation 1:** Exposed concrete masonry units and structural columns left vulnerable to weather.



⊕ **Observation 2:** Unfinished perimeters with projecting rebar—highly susceptible to rust and continuity failure.

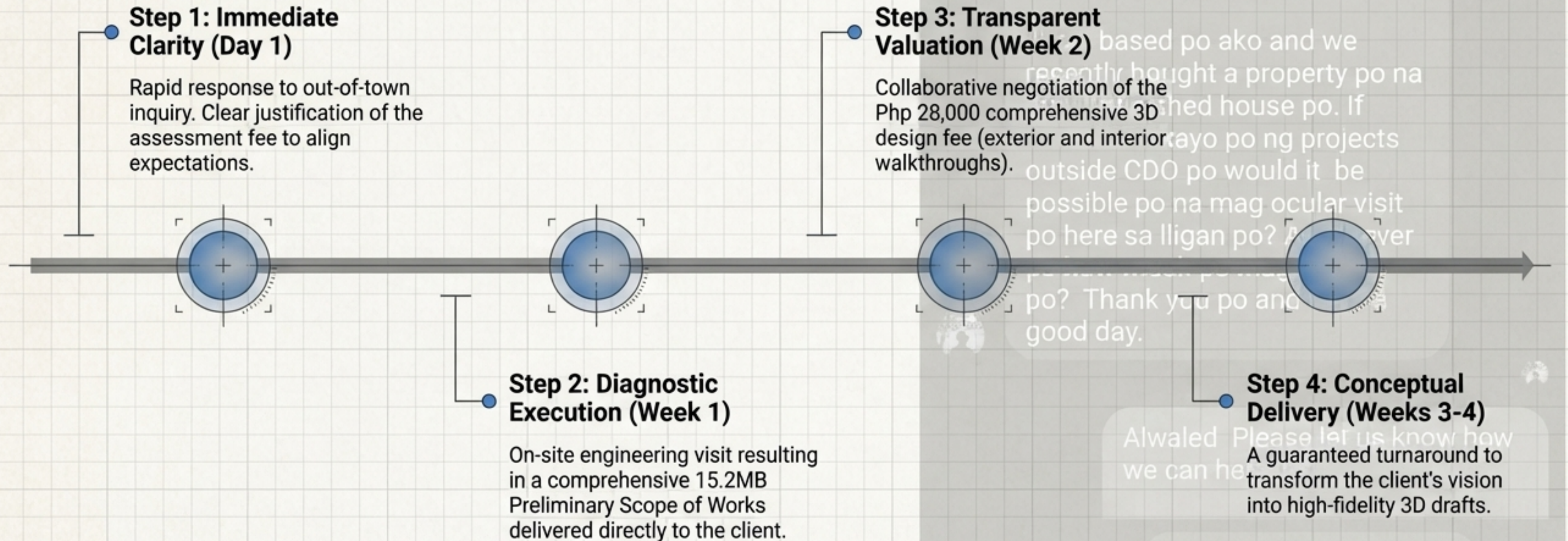
⊕ **Observation 3:** Damp soil conditions and vegetative overgrowth threatening baseline foundation stability.

Investing in Certainty Before Laying a Single Brick

	Standard Contractor Walkthrough	JMG Structural Diagnostic
FOCUS	Layout & visual guesswork	Structural integrity, load-bearing capacity, and exact as-built measurements
TECHNICAL ACTIONS	30 minutes with a general foreman offering verbal estimates	1-2 hours of rigorous rebar corrosion checks and foundation load assessments by dedicated Engineering and Architectural professionals
THE DELIVERABLE	A rough verbal quote	A comprehensive 15.2MB Structural & Site Assessment PDF and calculated ROI

The Php 5,000 Out-of-Town Assessment Fee is fully deductible from the final contract—an investment in total structural peace of mind.

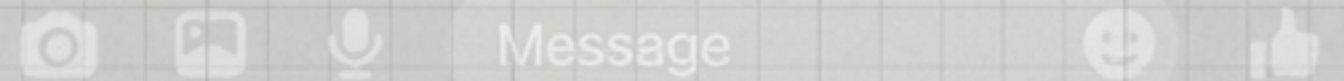
Secret 5: Managing the Out-of-Town Build Process



Hello, good afternoon. I hope the JMG team is doing well po. Ask lang po sana ako if tumatanggap po ba kayo ng projects outside CDO po?

based po ako and we recently bought a property po na finished house po. If kayo po ng projects outside CDO po would it be possible po na mag ocular visit po here sa lligan po? A answer po? Thank you po and good day.

Alwaled Please let us know how we can help
A guaranteed turnaround to transform the client's vision into high-fidelity 3D drafts.



The Structural Resurrection Model

Engineering a baseline fit for a high-end transformation.

Exposed Rebars

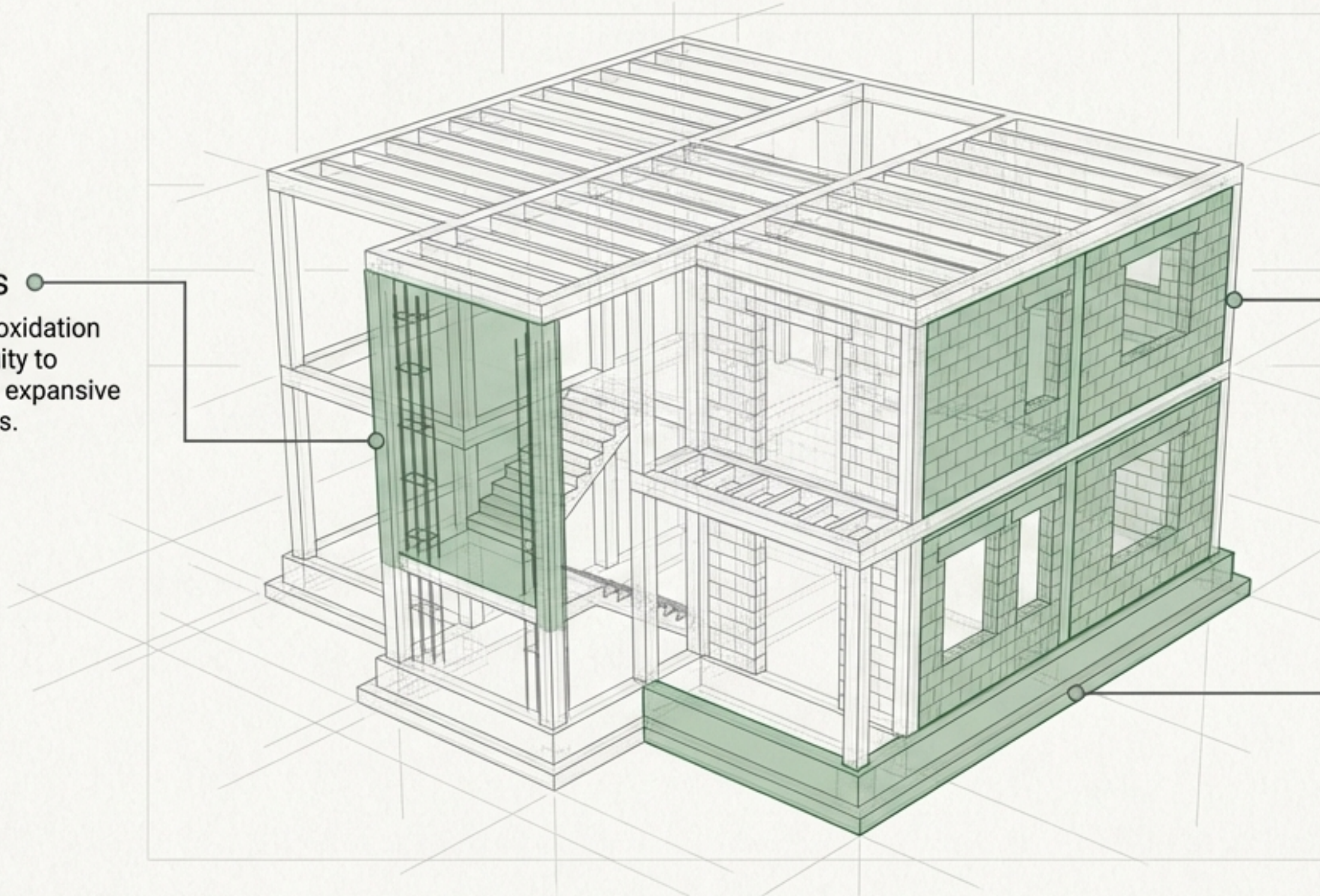
Advanced testing for oxidation and structural continuity to ensure safe tie-ins for expansive second-story additions.

Existing CHB Walls

Evaluation of 100mm and 150mm units for moisture retention, structural hacking damage, and load-bearing capacity.

Perimeter Foundations

A total structural audit against damp soil conditions to guarantee baseline stability for extending the footprint.



The Client Mandate: Refining the Atmosphere

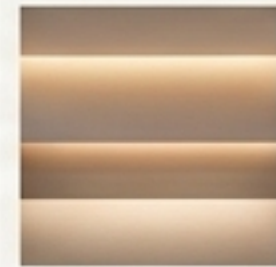
The design is already nice and clean...

Add a bit dew details sa interior like lights or ambient lighting...

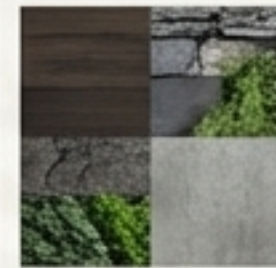
Outdoor design add few more details...



The Objective:
Elevate a "clean" baseline into a "warm, highly detailed" living space.



Layered Illumination.
Transitioning from standard functional lighting to curated evening glows.



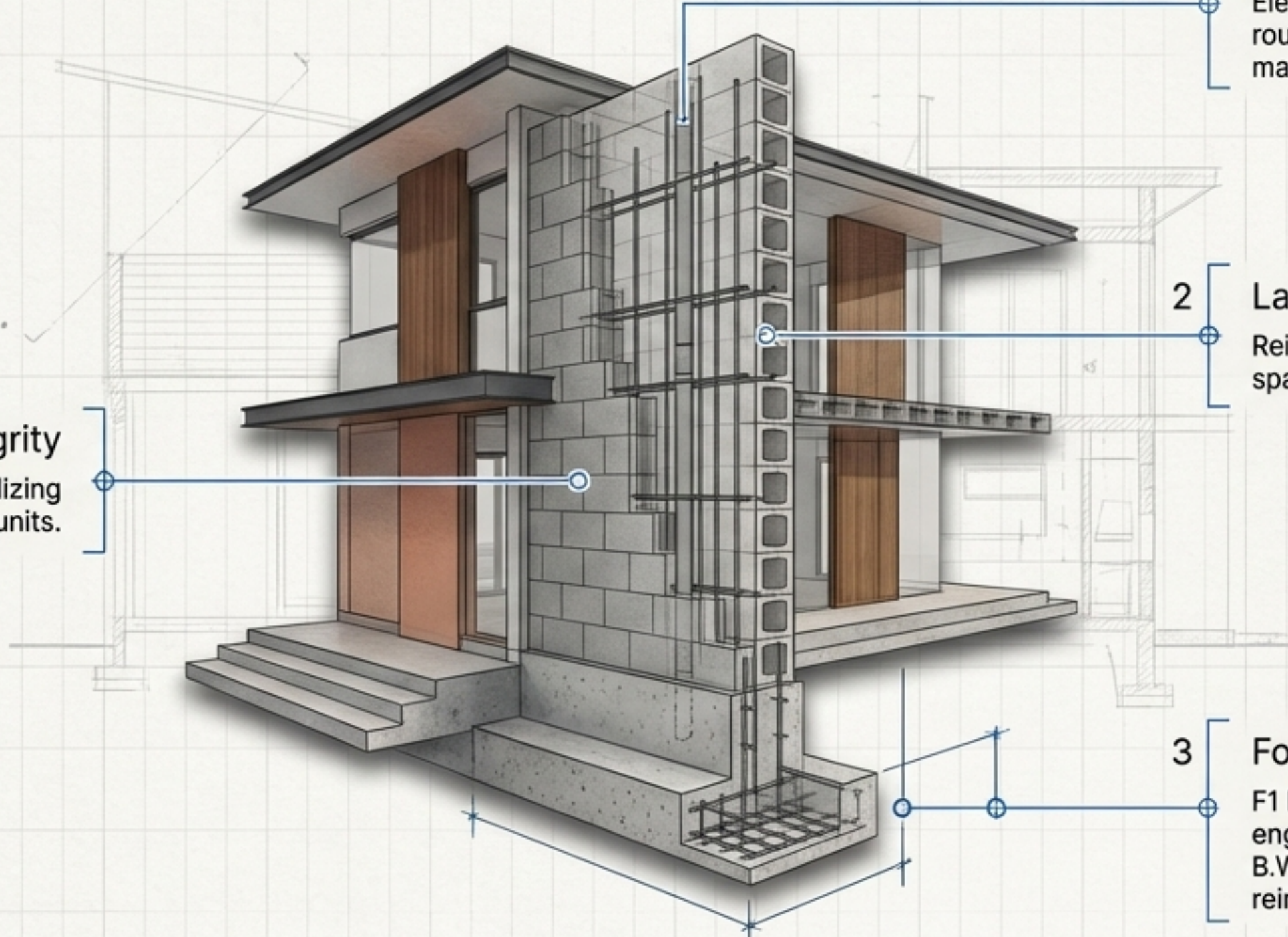
Material Depth & Framing.
Introducing wood-tone elements and structural hardscaping to soften modern geometry.



Secret 3: Precision Engineering Specifications

True elegance is what remains unseen.

Structural Integrity
Monolithic CHB Walls utilizing
100mm and 150mm THK units.



4 Utility Concealment
Electrical and plumbing (uPVC) systems
routed through pre-planned chases to
maintain a flawless aesthetic.

2 Lateral Strength
Reinforced with 10mm rebars
spaced every 400mm horizontally.

3 Foundation Footings
F1 Footings (1200x1200x300mm)
engineered with 9 pieces of 16mmØ
B.W. transverse and longitudinal
reinforcements.

Secret 2: Integrating Material Depth

Materiality Matrix

Standard Design

Clean Concrete & Stone

Flat, monochromatic surfaces with minimal textural variation.

Dark Metal Trim

Simple dark metal frame with basic inserts.

Standard Spotlights

Functional illumination with limited architectural effect.

Basic Flat Facades

Single-plane exterior surfaces with uniform materials.

Luxe Upgrade

Vertical Wood Slat Cladding

Adding textural warmth and rhythmic visual interest, breaking up solid masses.

Warm Wood-Tone Gate Panels

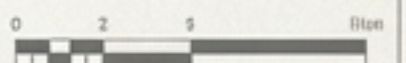
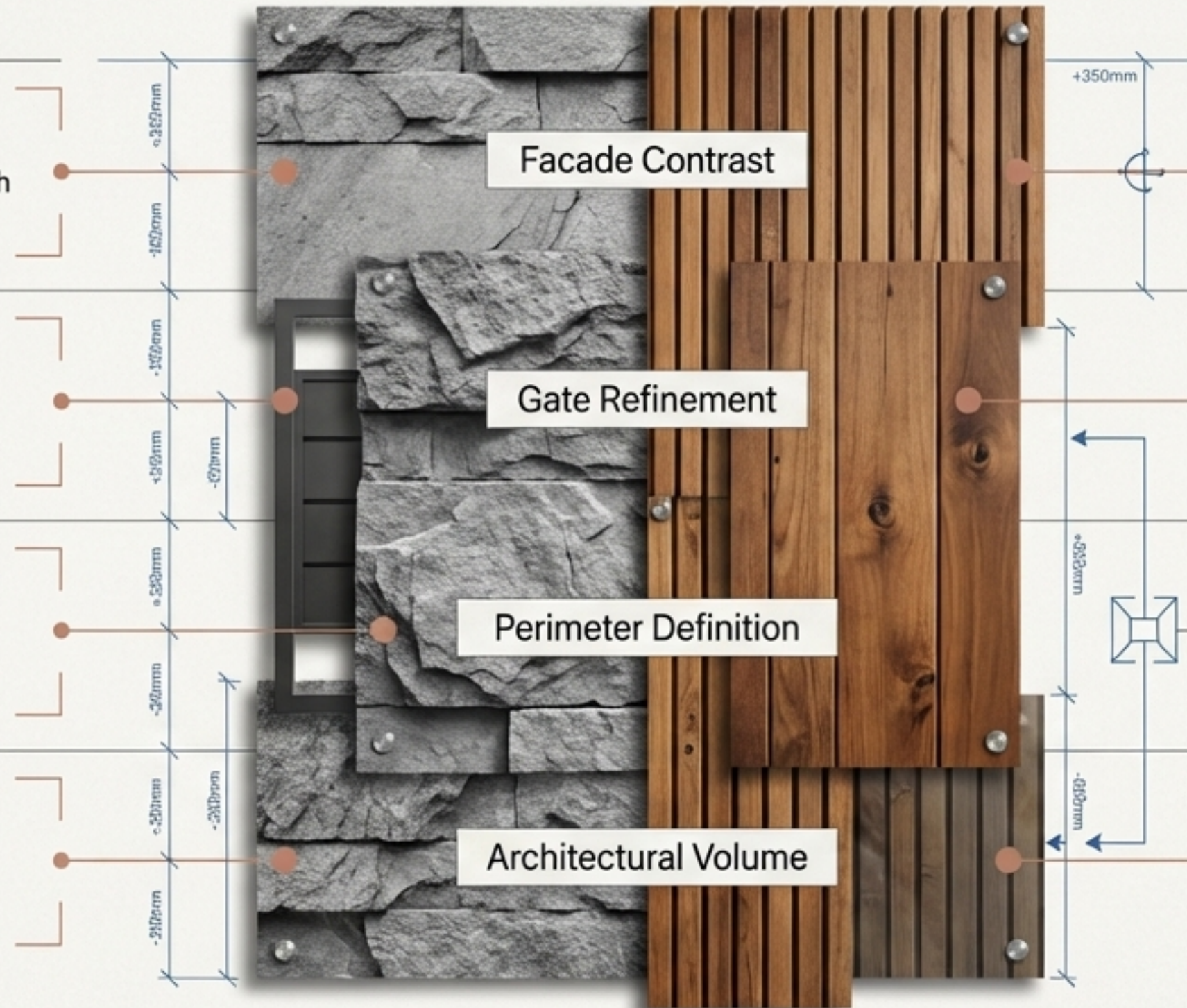
Unifying the street-level view with architectural wood elements.

Up/Down Wall Sconces

Washing light across material textures for dramatic evening depth.

Layered Material Depth (Stone + Wood + Glass)

Creating depth and dimension through material stratification.



Secret 1: Layering Ambient Lighting for Nighttime Warmth



1. Soffit Glow

Hidden LED strip lighting integrated beneath deep roof eaves, designed to 'wash' the upper stone facade and highlight monolithic textures.

2. Balcony Accents

Directional ambient lights on floor and wall surfaces to define the perimeter and showcase the transparency of tempered glass railings.

3. Interior Bleed

3D models engineered so warm interior light intentionally bleeds through large structural windows, radiating welcoming, high-fidelity warmth outward.



Secret 4: Strategic "Outdoor Framing"



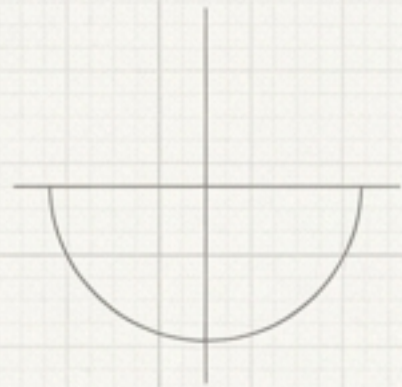
1 Structured Greenery
Replacing basic grass layouts with architectural planter boxes along driveways and walkways.



2 Tropical Softening
Integrating specific tropical plant profiles (e.g., small palms, structured shrubs) to soften sharp modern geometry.

3 Perimeter Illumination
Upgrading boundary walls with directional sconce lighting to ground the home to its lot after dark.

Secret 6: Transparent 3D Design & Iteration



The journey from an unfinished shell to a Luxe sanctuary requires constant iteration. We provide a Php 28,000 comprehensive 3D design package—covering both exterior refinements and highly detailed interior walkthroughs.

Step 1: 3D Model Engineering
Integrating targeted lighting & material maps



Step 2: Rendering Production
Running high-fidelity day and evening passes



Step 3: Client Presentation
Delivering the upgraded visual package for final sign-off

The Anatomy of a JMG Masterpiece

Secret 1:
Layering Ambient
Lighting

Secret 2:
Integrating Material
Depth

Secret 3:
Precision Engineering
Specs

Secret 4:
Structural
Resurrection

Secret 7:
Transparent
3D Iteration

Secret 5:
Outdoor
Framing

True luxury is not one single element—it is the synchronized orchestration of structural integrity, engineered lighting, and uncompromising design.

Secret 6:
Out-of-Town
Build Process



The Architect's Canvas Awaits.

Partner with JMG Architects to engineer your vision into reality.



Excellence

Meticulous planning and sustainable design.

Innovation

Blending tradition with cutting-edge ideas to create unique spaces.

Community

Designs that enrich the cityscape of Cagayan de Oro, Iligan, and beyond.

Harvard St., Cambridge Subdivision, Brgy. Iponan, Cagayan de Oro City
Smart: 09996196855 | Viber/WhatsApp: 09171056435
Email: teamjmg@googlegroups.com